



Look what is new in Provider Pathways

Healthy Blue is pleased to announce two new modules that have been added to our self-paced eLearning called Provider Pathways.

Provider Pathways is a 24/7 digital resource that gives a foundation on doing business with Healthy Blue. Provider Pathway not only provides what you need to know about the key tools and resources for doing business with us, but we have now added these new modules:

- CAHPS® — Find out what the Consumer Assessment of Healthcare Providers and Systems survey is and how it impacts you.
- SBIRT — Learn more about this important screening, brief intervention, and referral to treatment (SBIRT) method. Let us show you how a simple evidence-based process can be utilized with all types of patients in a variety of settings to identify those who may need additional substance use support.

CAHPS® is a registered trademark of the Agency for Healthcare Research and Quality (AHRQ).

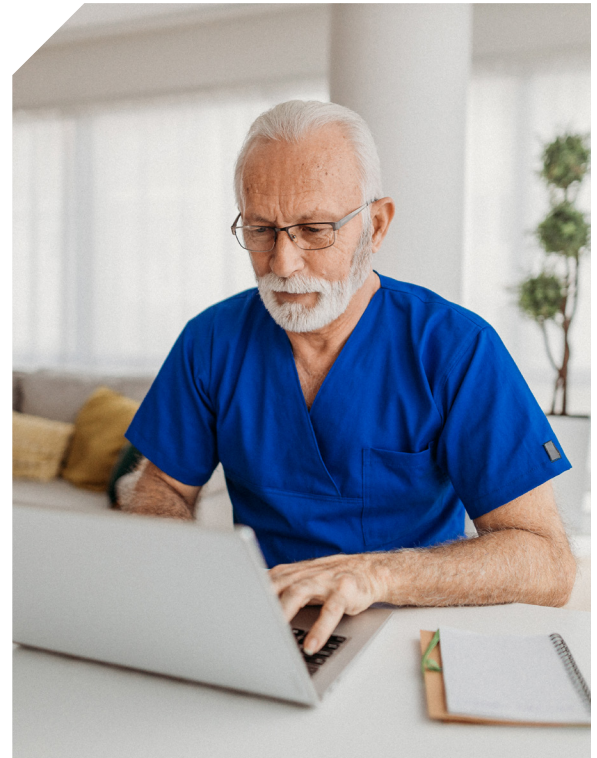


How to Find Provider Pathways

Provider Pathways — Doing Business with Healthy Blue eLearning, gives you the flexibility for scheduling training for yourself and your staff. You can find this training on the Healthy Blue provider website:

- Go to <https://provider.healthybluela.com>.
- Under *Resources* in the top navigation menu, select **Training Academy**.
- Once on the page, scroll down to **Provider Pathways** under *Training and Registration* and select the **registration link**.

You will find the new modules in the table of contents shortly after starting the training.



More information

If you have questions about this new provider resource, please reach out to your Provider Relationship Management representative.



Healthy Blue is the trade name of Community Care Health Plan of Louisiana, Inc., an independent licensee of the Blue Cross Blue Shield Association.